

Makromajanduslikud väljakutsed

Biomajanduse strateegia avaseminar

Madis Aben

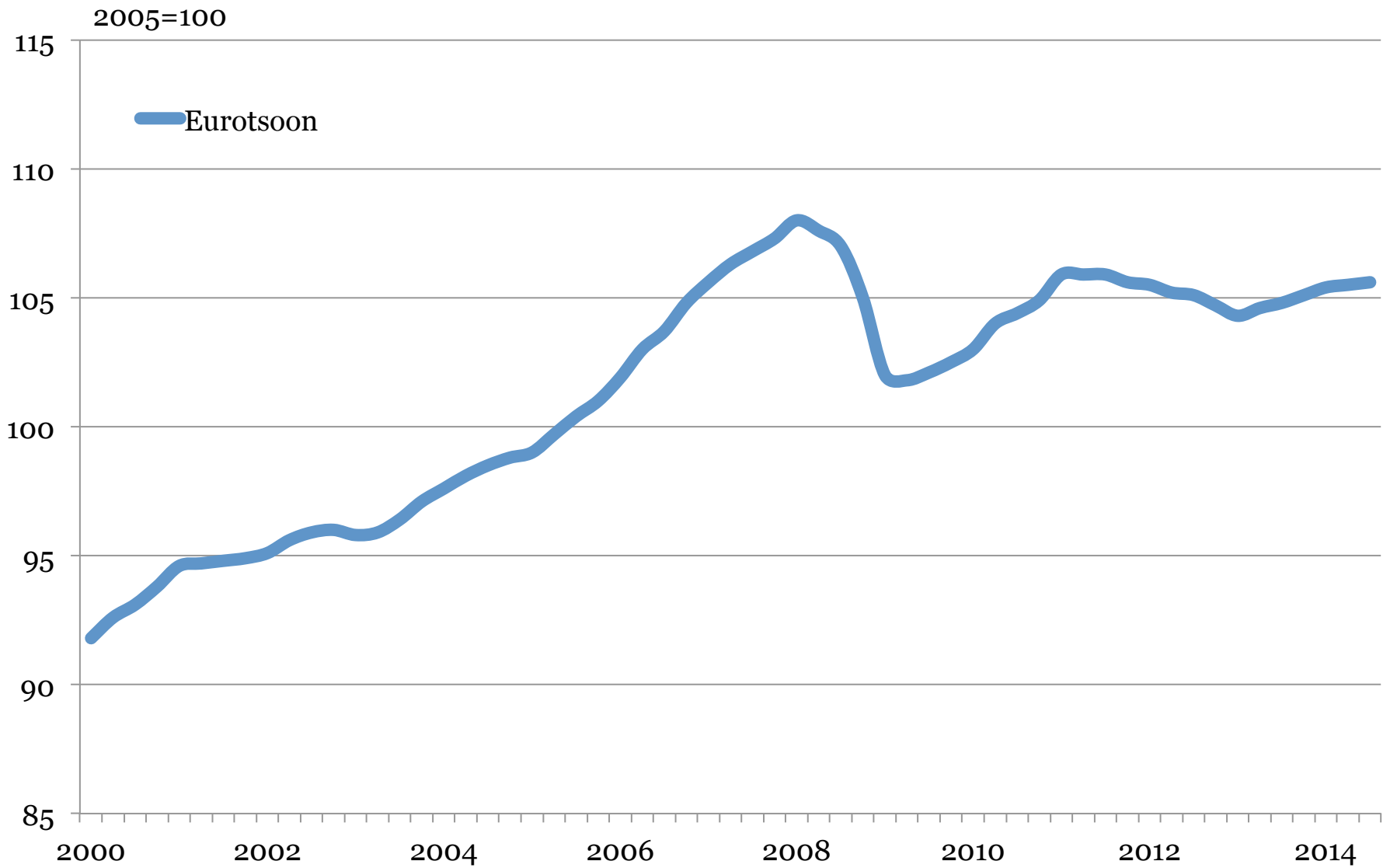
4.2.2015

Sisu

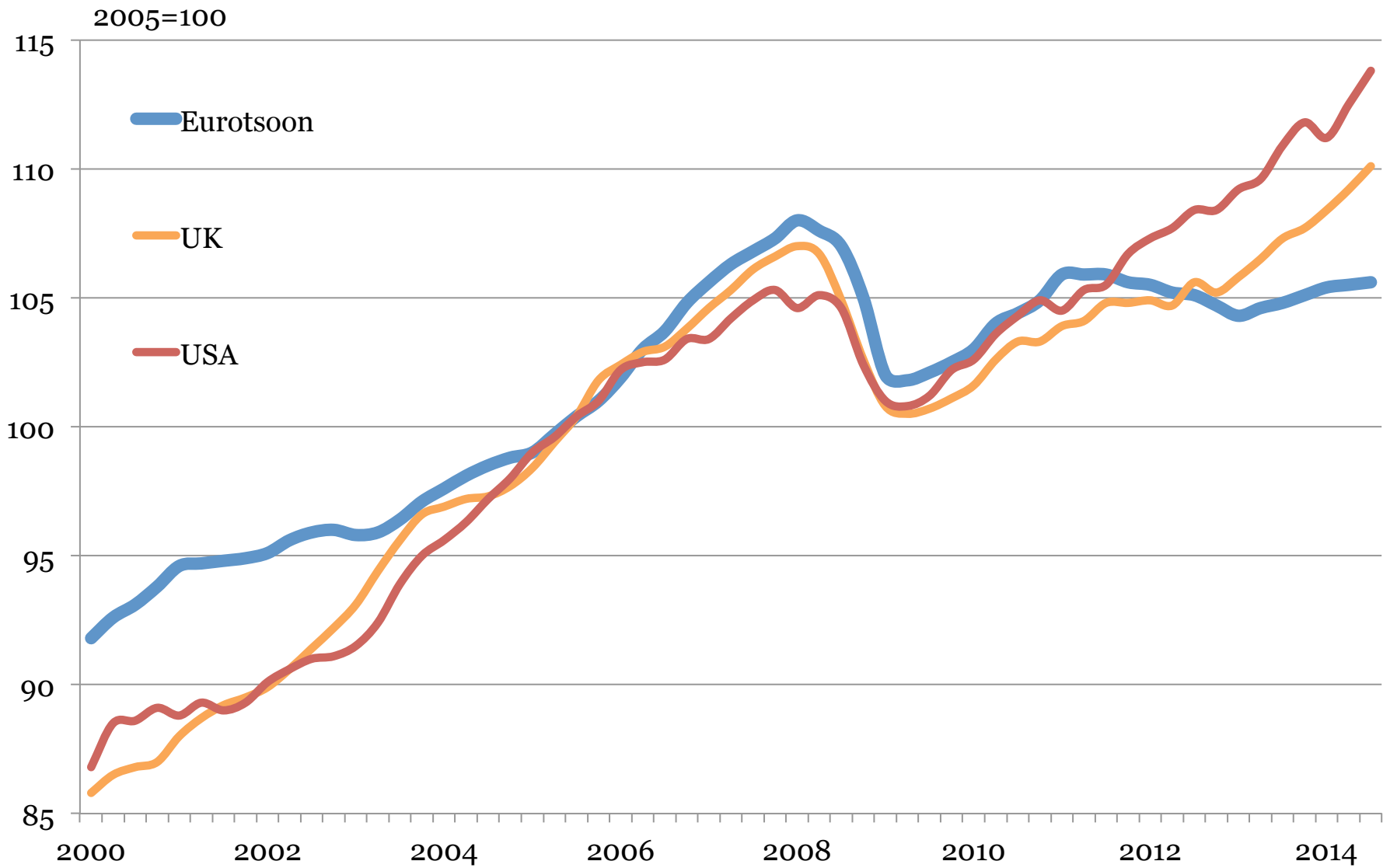
- Subjektiivsed väljakutsed
- Objektiivsed väljakutsed
- Meie biomajandus
- Võimalused ja ohud

Subjektiiused väljakutsed

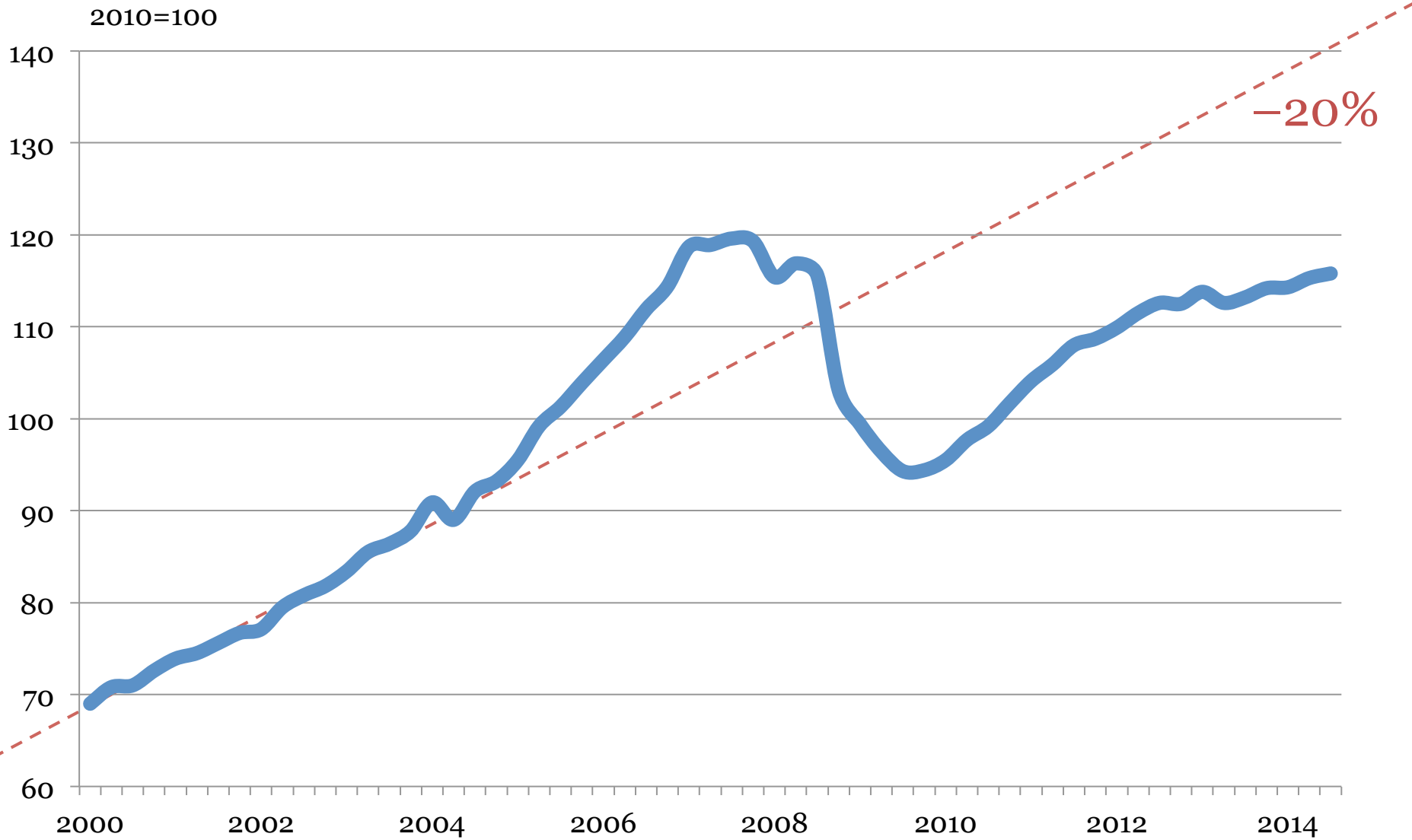
Eurotsooni SKP tase



SKP tase

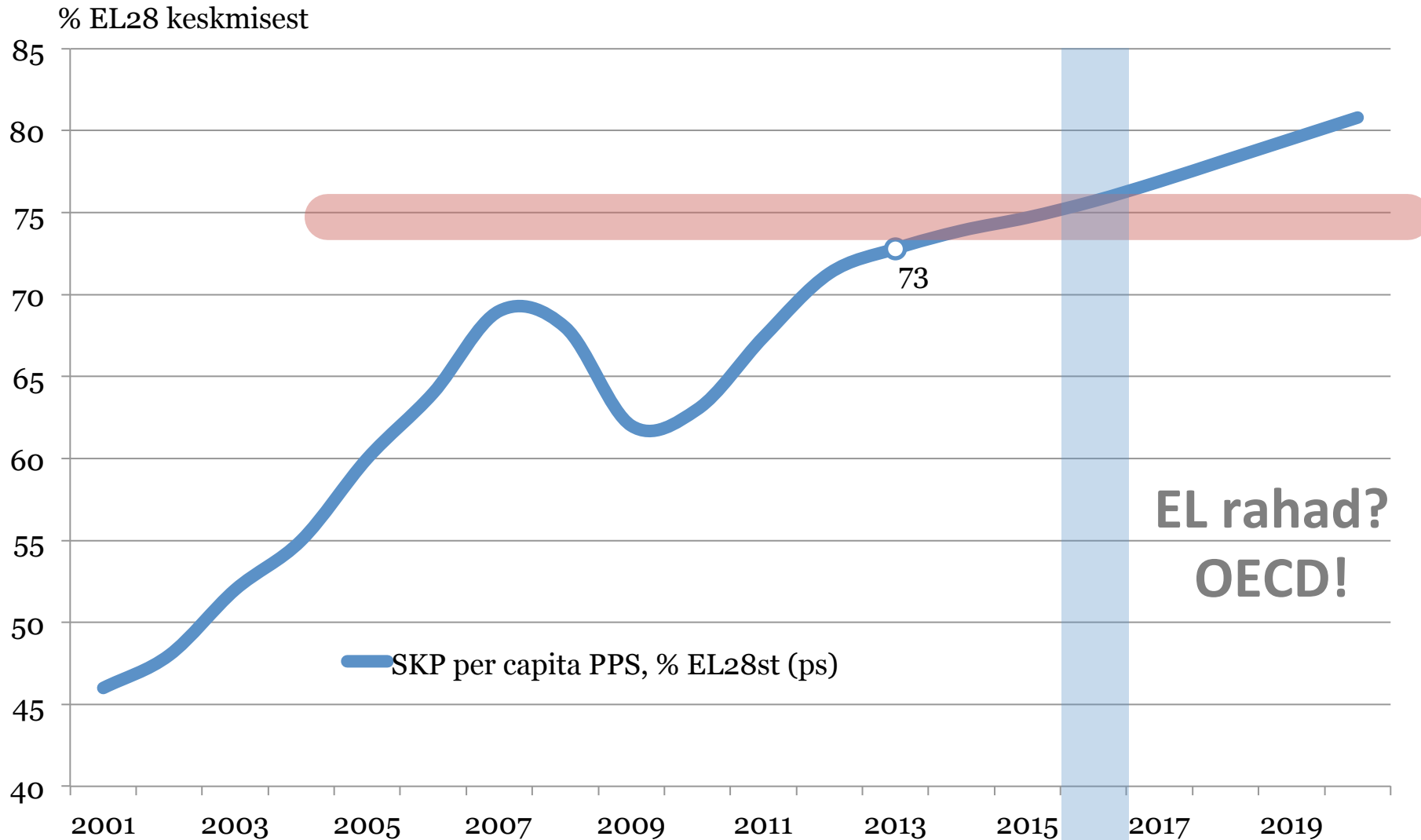


Eesti SKP tase ja “potentsiaal”

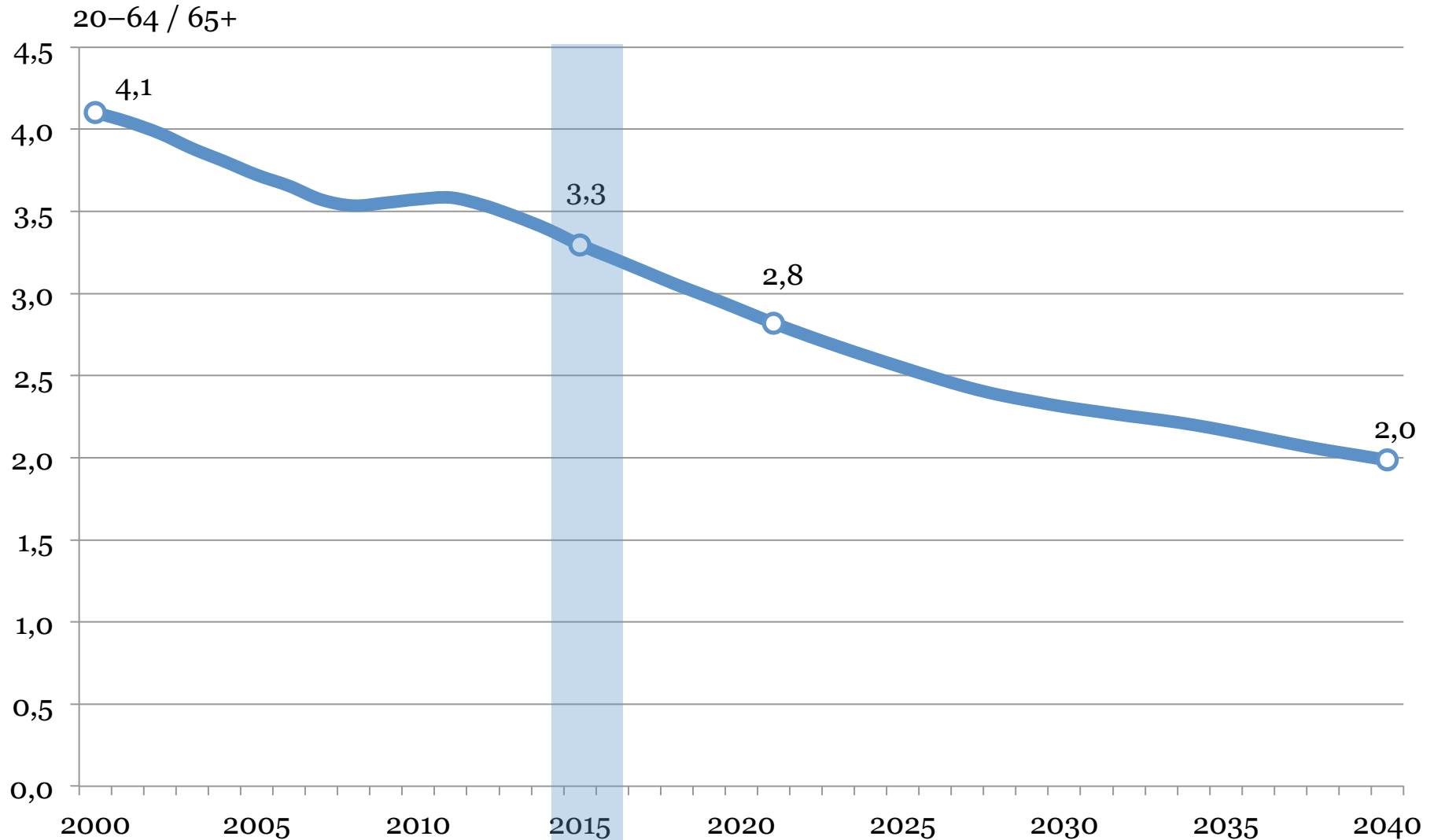


Objektiivsed väljakutsed

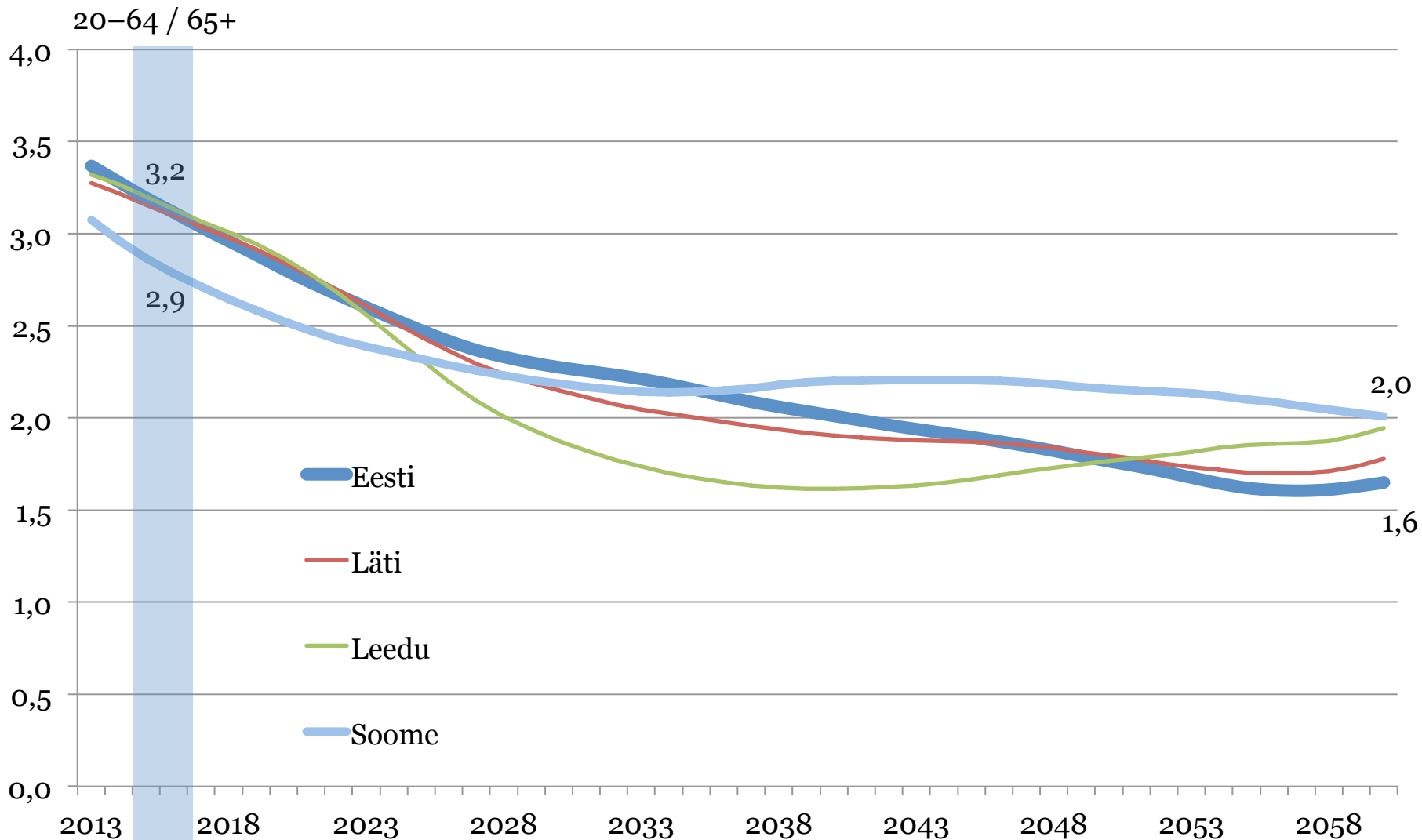
Majanduslik konvergennts “maksab kätte”



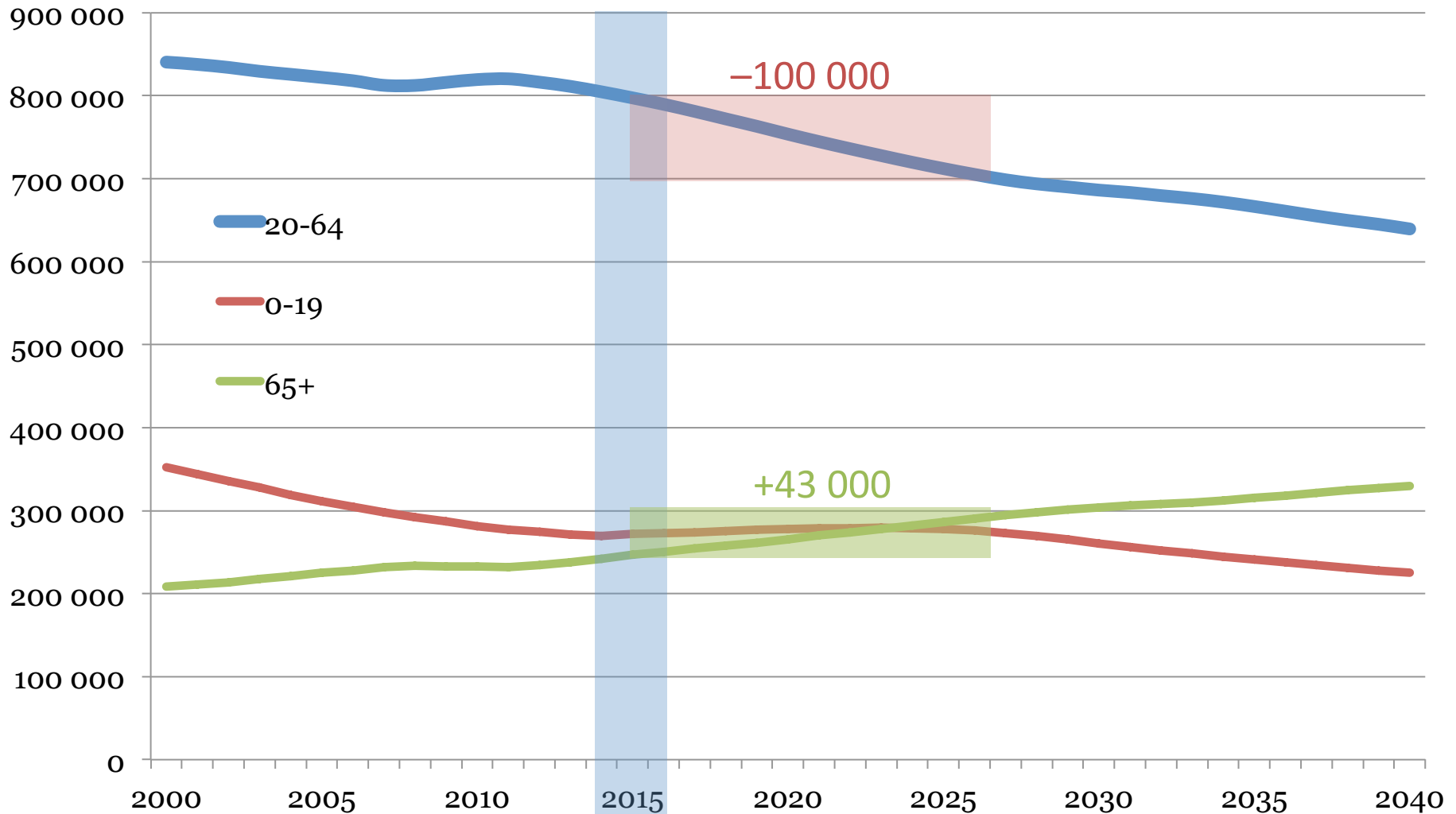
Eesti tööealised pensioniealiste suhtes



Eesti–Läti–Leedu–Soome tööealised / p.



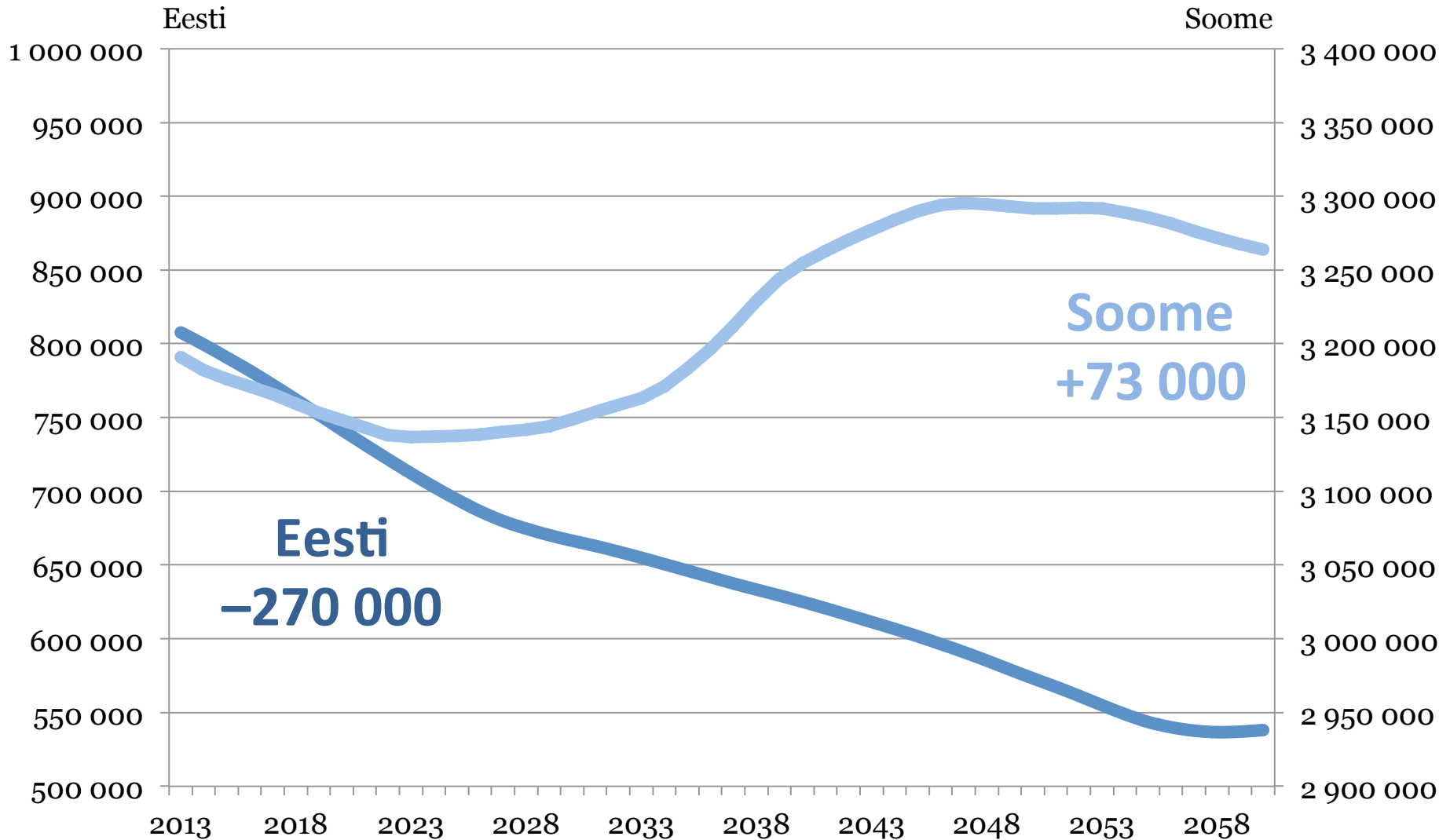
Eesti tööealised ja ülalpeetavad



Biomajandus ja töökohad?

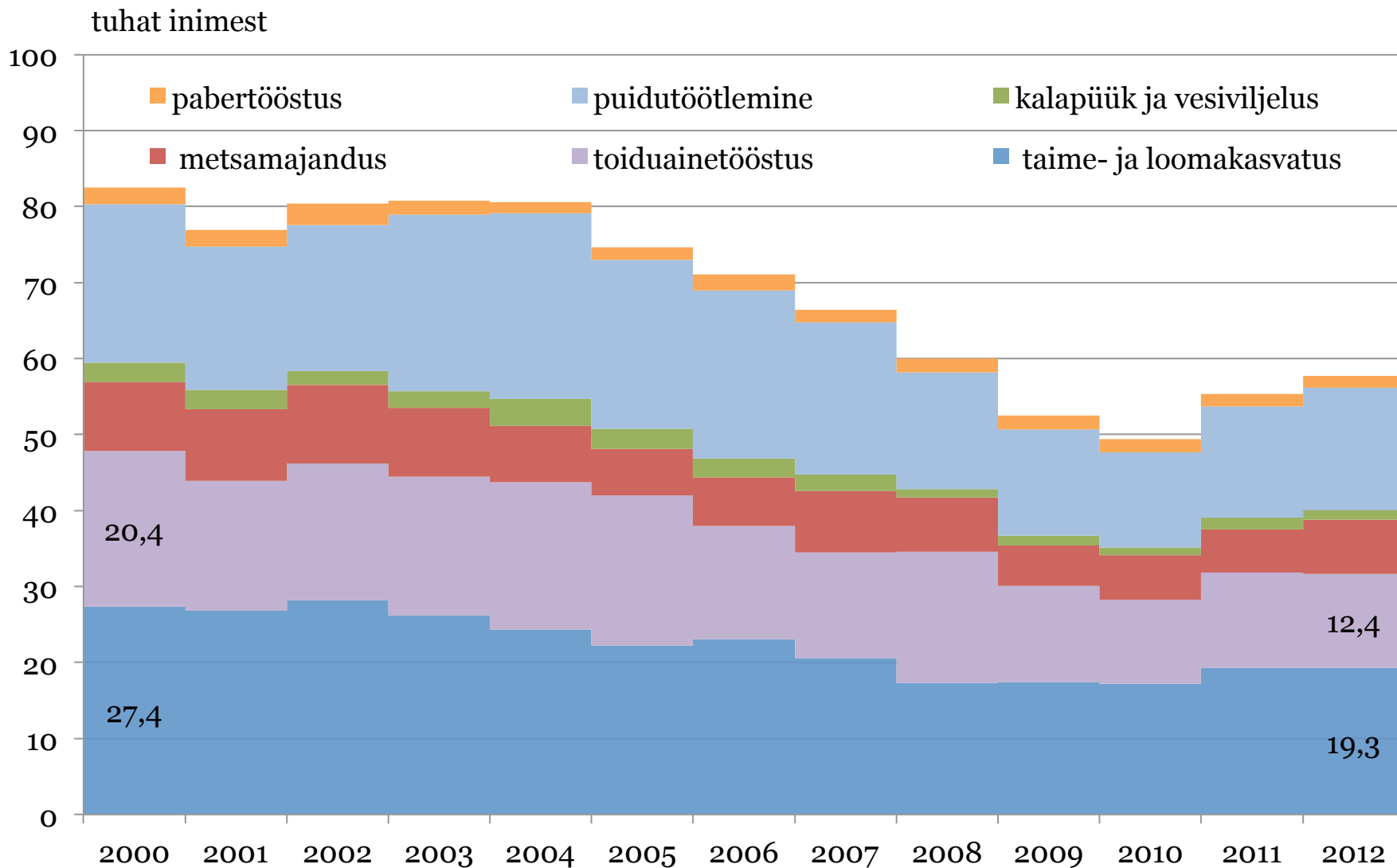
- Soome biomajanduse strateegia:
 - 100 000 uut töökohta 10 aastaga!
- Aga meie rahvastik väheneb!

Eesti ja Soome tööealised (20–64)

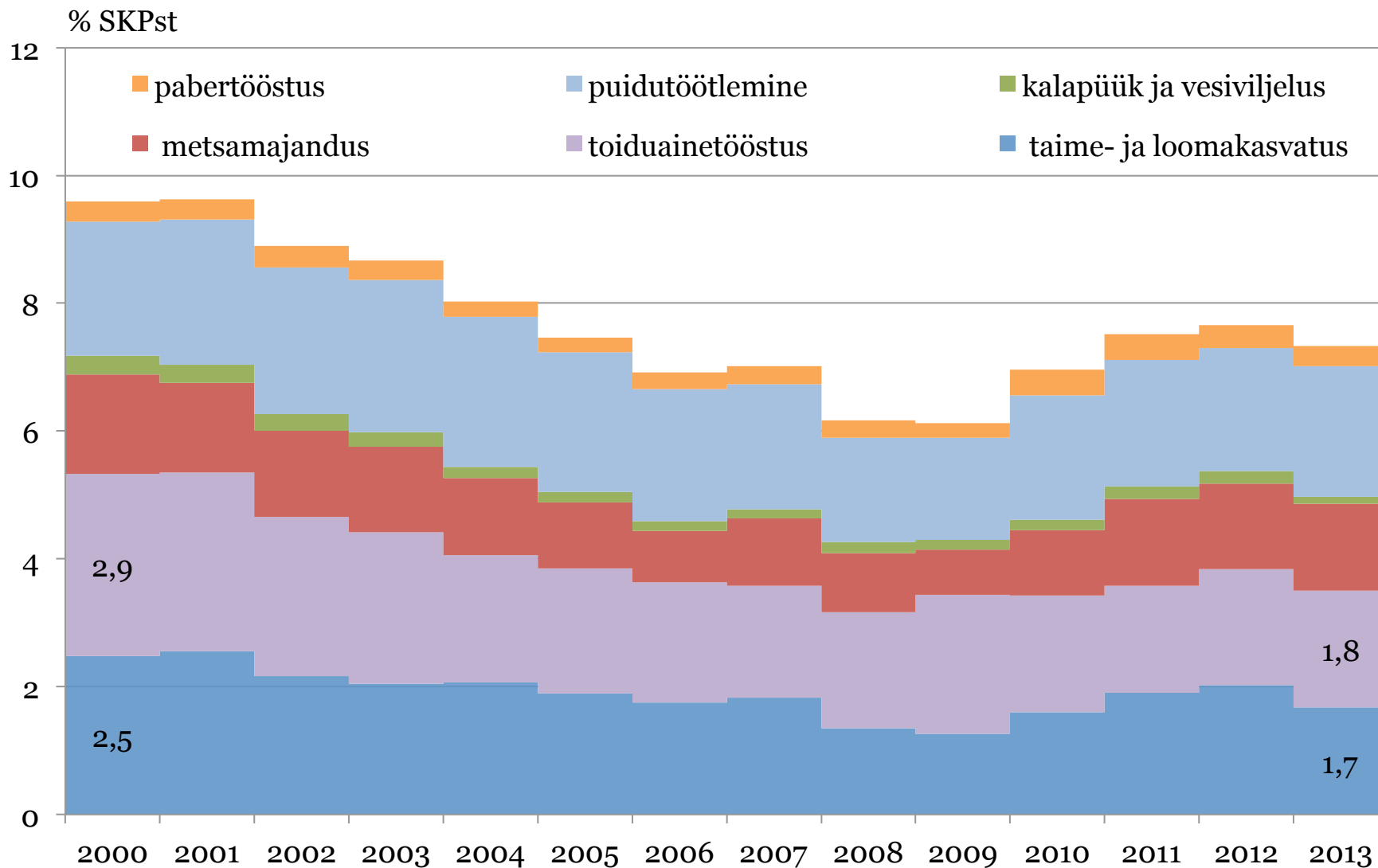


Meie biomajandus

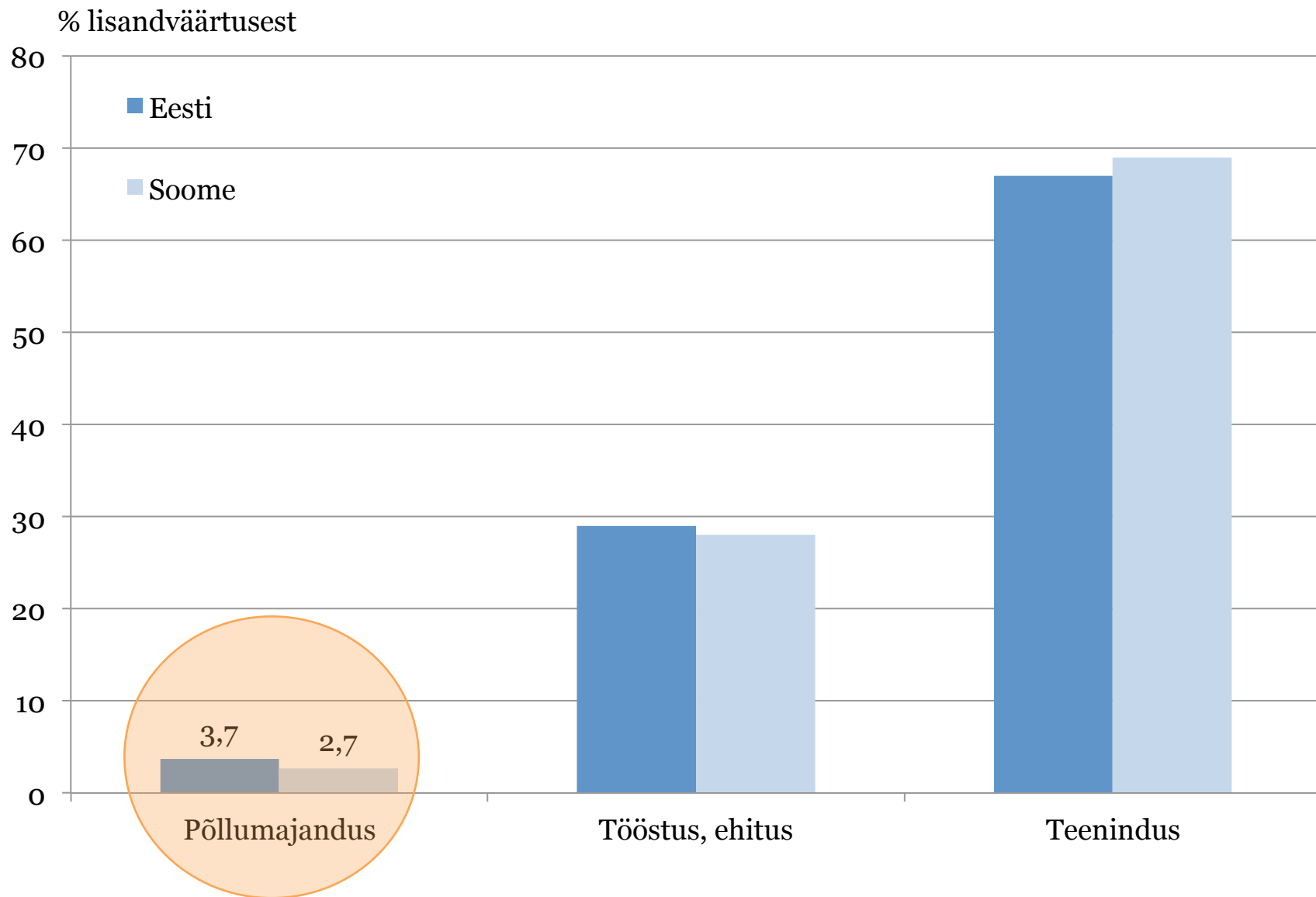
Eesti biomajanduses hõivatud



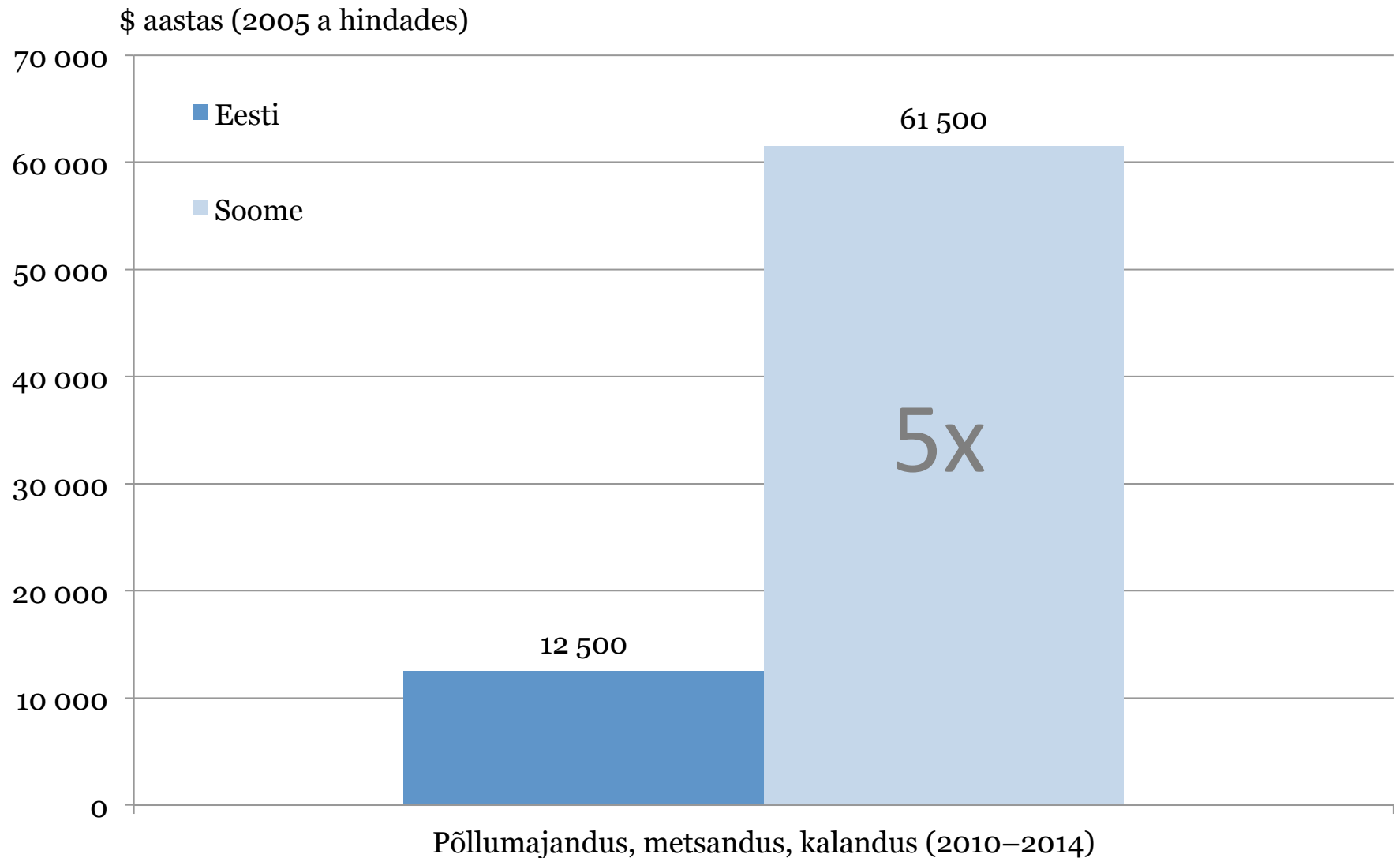
Biomajanduse osakaal Eesti SKP



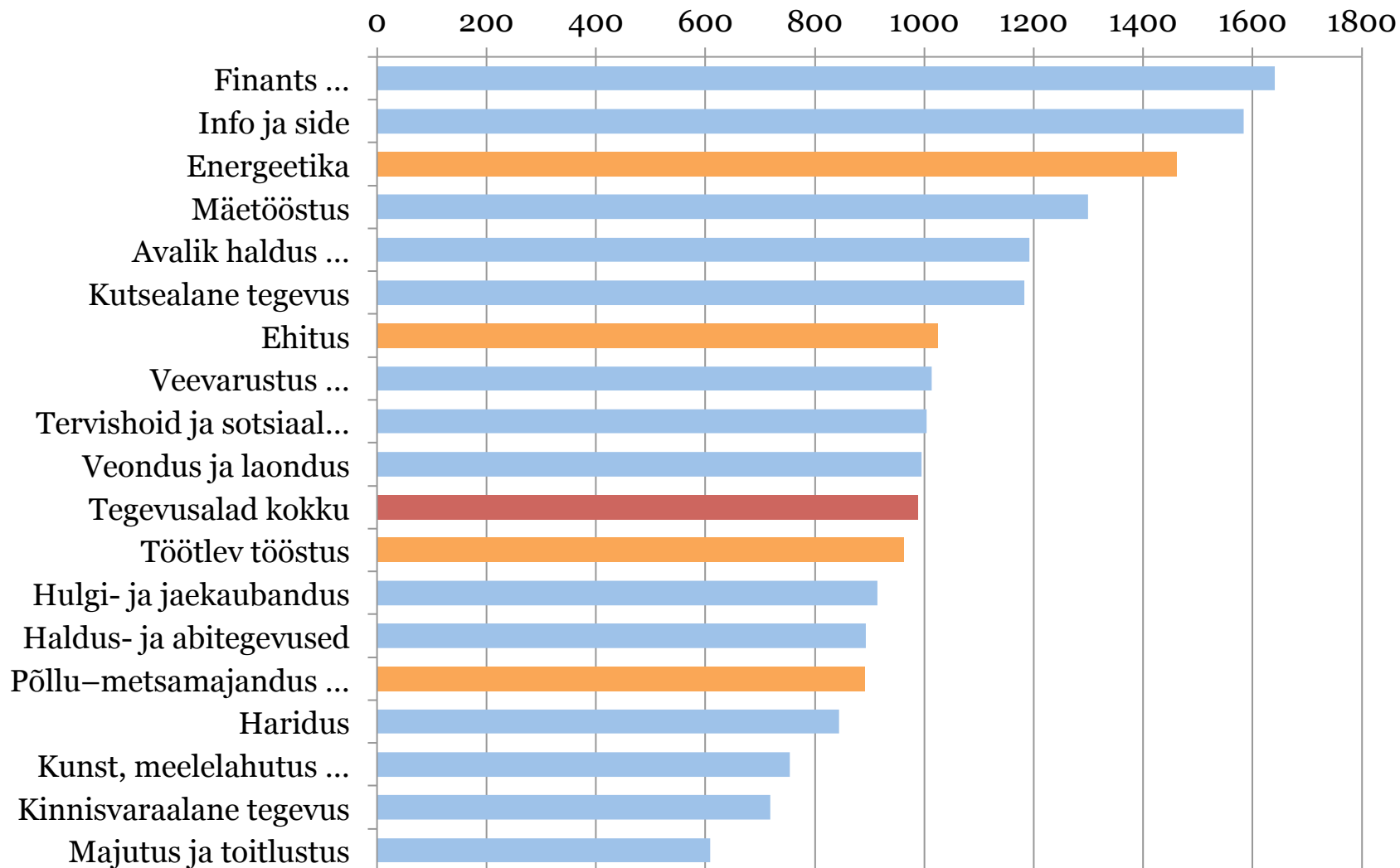
Eesti ja Soome maj. struktuurid sarnased



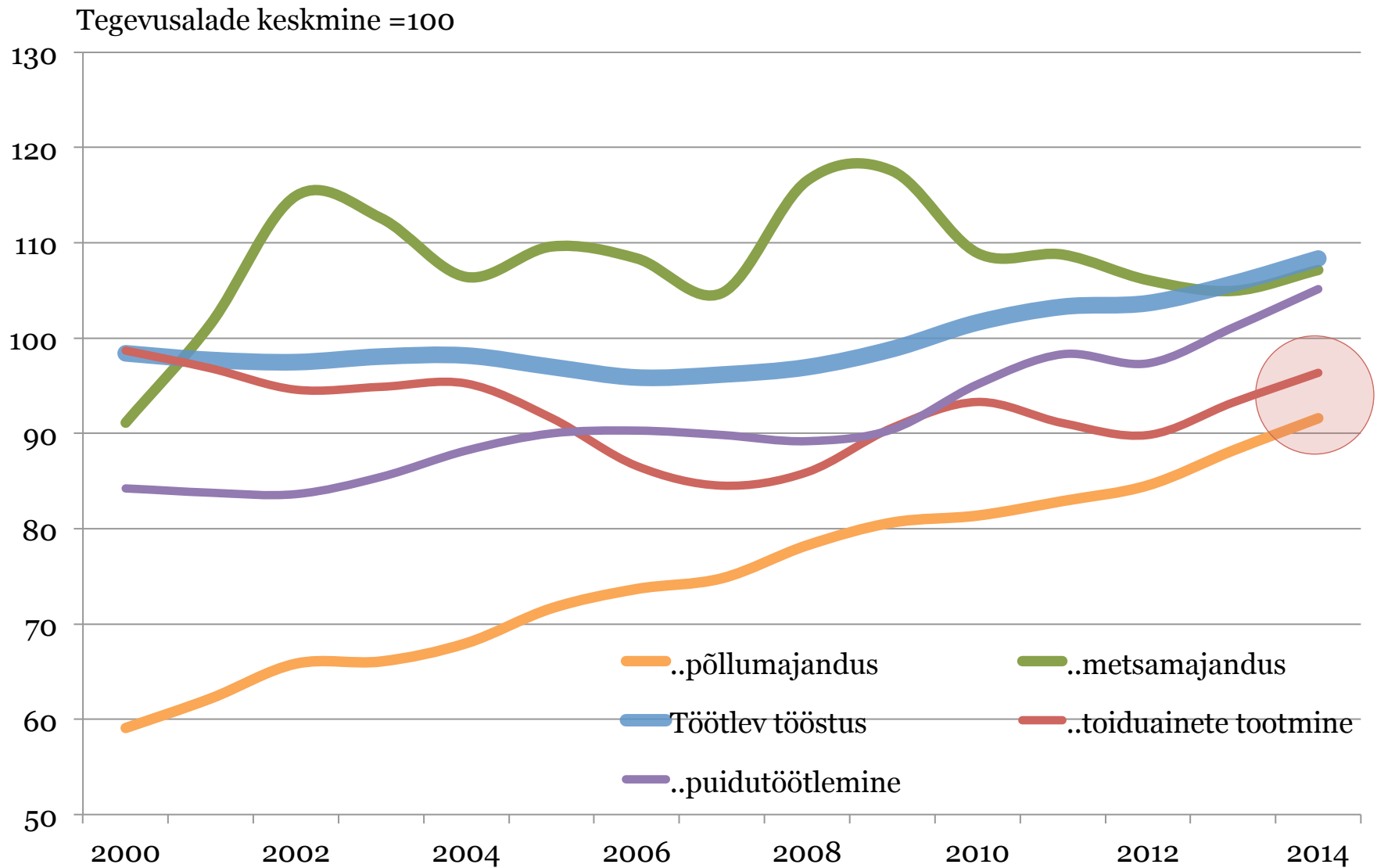
Primaarsektori lisandväärtus töötaja kohta



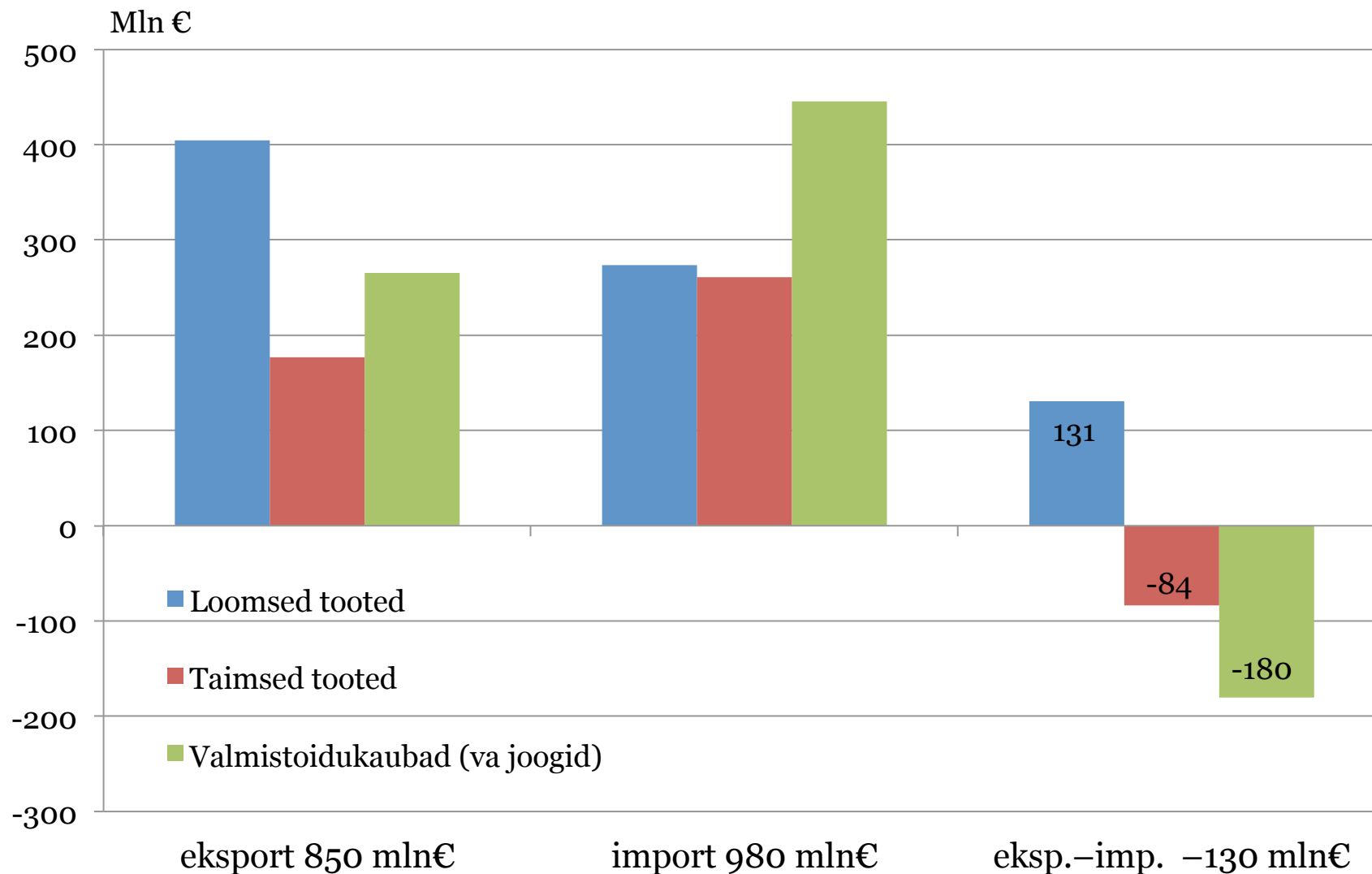
Biomajandus palgavõrdluses



Biomajandus ettevõtluse palgavõrdluses

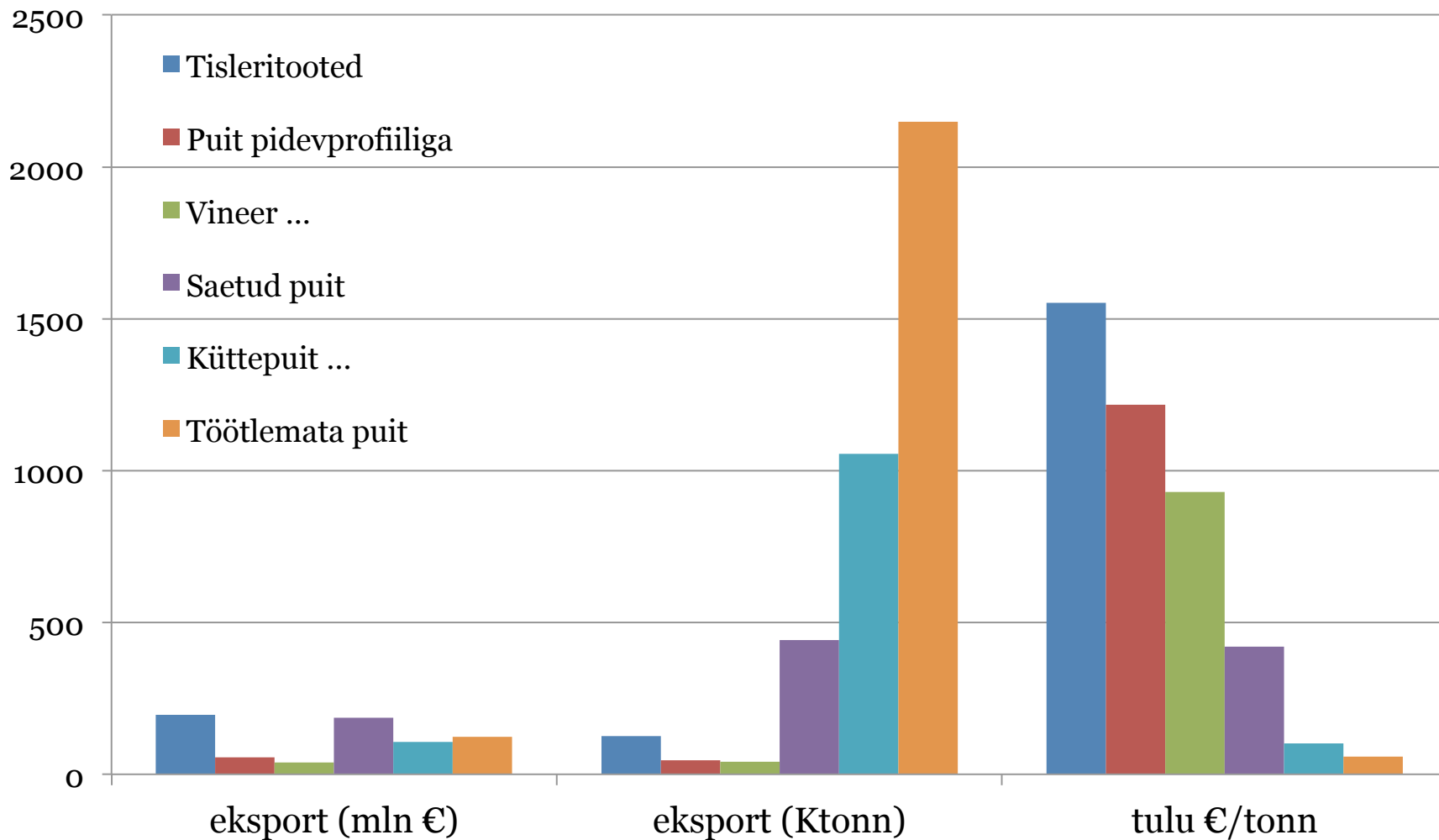


Eesti toidusõltumatus



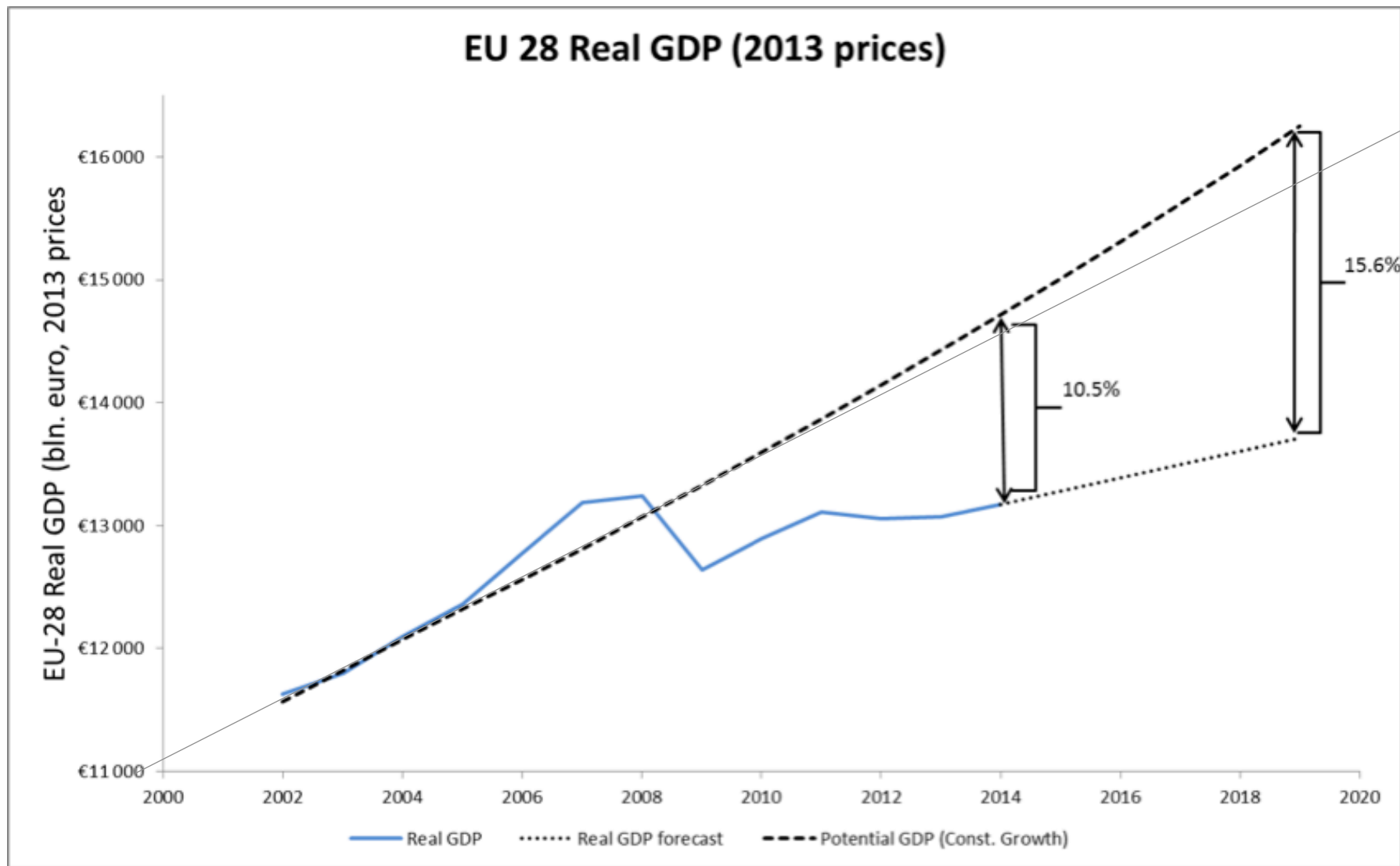
Kuidas me puitu ekspordime?

mln €; tuhat tonni



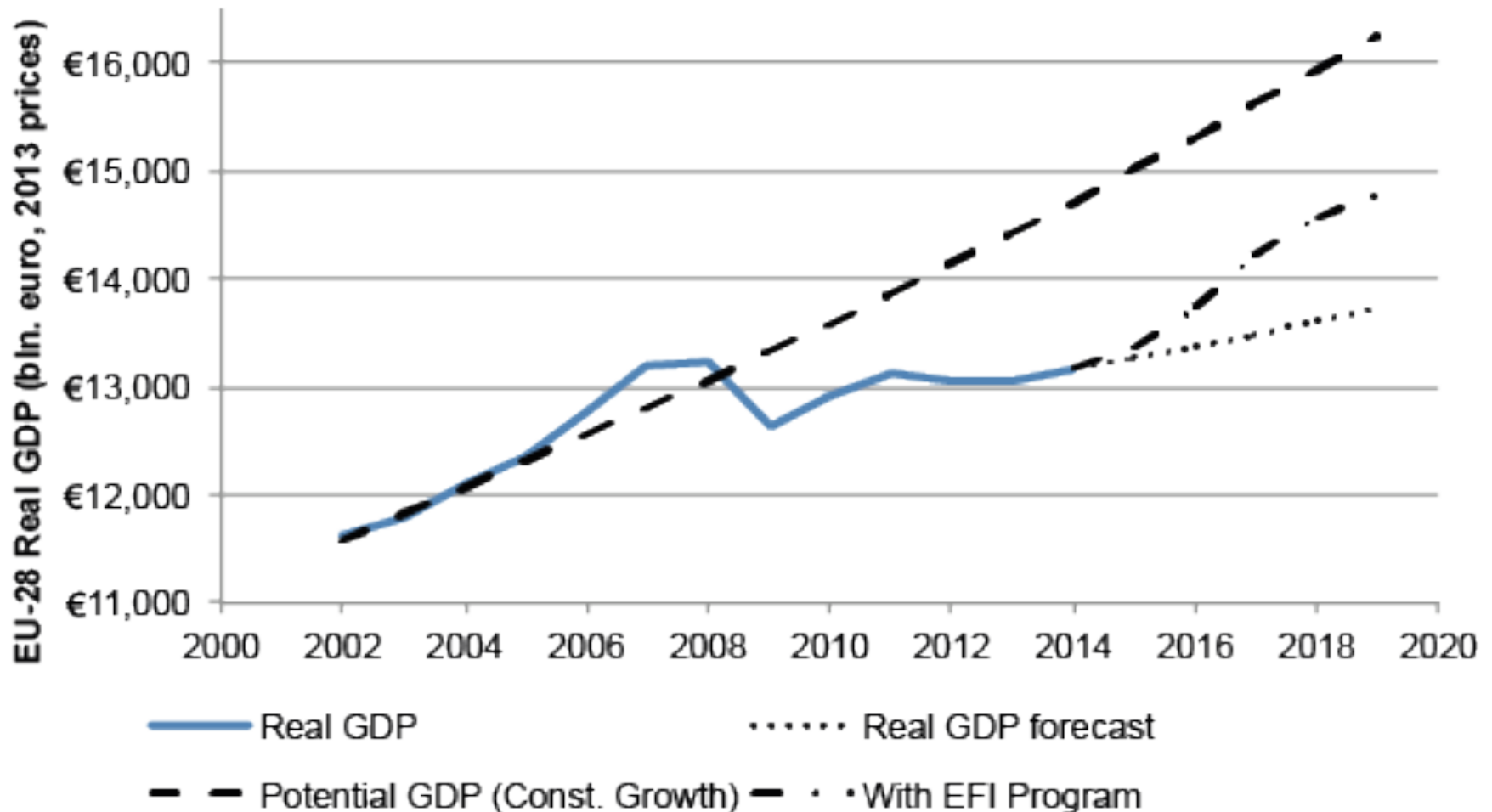
Võimalused

EL28 SKP tase ja “potentsiaal”

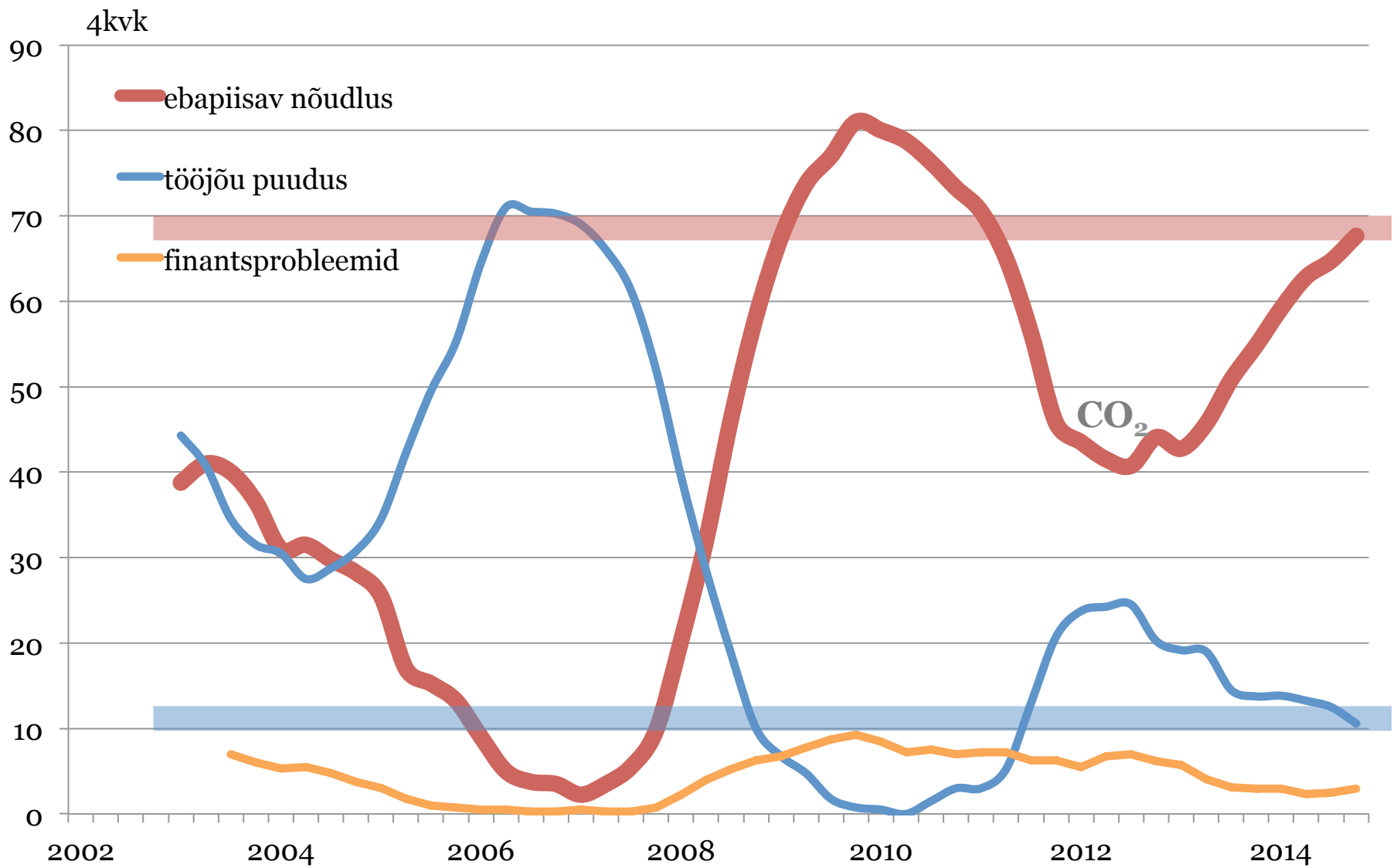


5,5% ELi SKPst e 700 000 000 000 €

EU-28 Real GDP

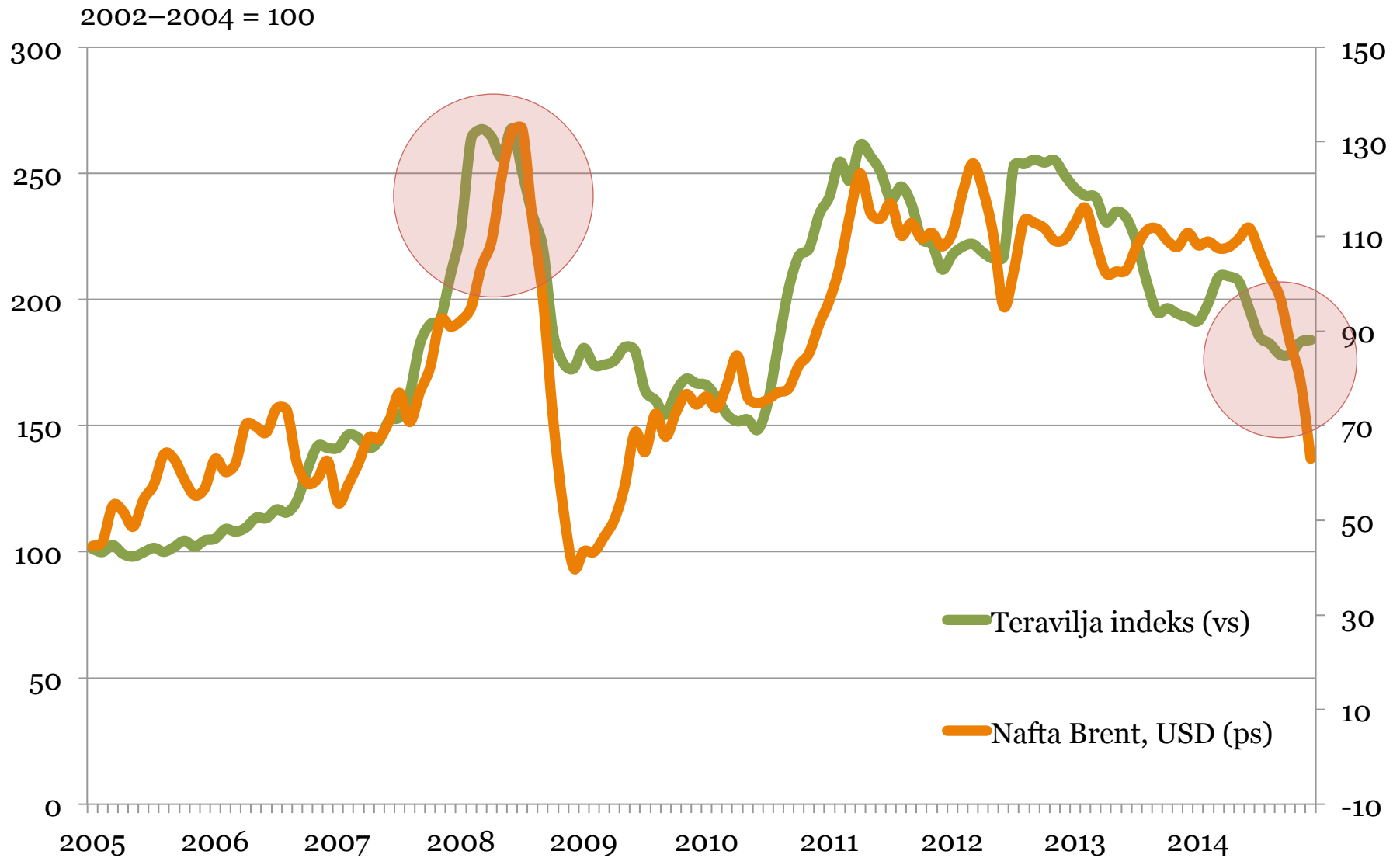


Ehitus – mis piirab äritegevust?



Ohud

Biokütused ja näljahäda



Tänan